



Synergy Steam

KETTLE STANDS for Electric & Gas Tabletop Kettles



Shown with optional drain cart



Shown with optional drain cart slid forward



Shown with optional drain cart splash guard raised

Project _____

Item No. _____

Quantity _____

- Stand with bullet feet for electric tilting kettle
- Stand with bullet feet for gas tilting kettle

STAND CONSTRUCTION

- 304 stainless steel
- Heavy duty 1-1/2" square tubing open leg frame
- 18" high, heavy gauge deck for ergonomic equipment mounting
- 1" adjustable bullet feet
- All stand surfaces shall be polished to a uniform No. 3 finish ensuring maximum ease in cleaning and maintaining brilliant appearance, plus the safe and easy draining of cleaning water.
- Large 6" deep basin with high volume drain to a fixed lower drain pan
- Rear leg casters and front leg glides provide easy movement and stability.
- A removable front hinged splash shield serves as a drainbasin and work surface.

OPTIONAL DRAIN CART CONSTRUCTION

- separate drain cart designed to fit under the kettle support stand
- Pulls out for easy product transfers into steamer pans, stock pots or buckets
- Removeable splash guard

OPTIONS AND ACCESSORIES

(AT ADDITIONAL CHARGE)

- Drain Cart
 - Drain cart with removeable splash guard for stand with bullet feet
 - Drain cart with removeable splash guard for stand with casters
 - Drain cart plumbing install kit
- Casters for stand
- Flanged feet for stand (set of 4)
- Flanged feet for stand (set of 2)



KETTLE STANDS

BLODGETT

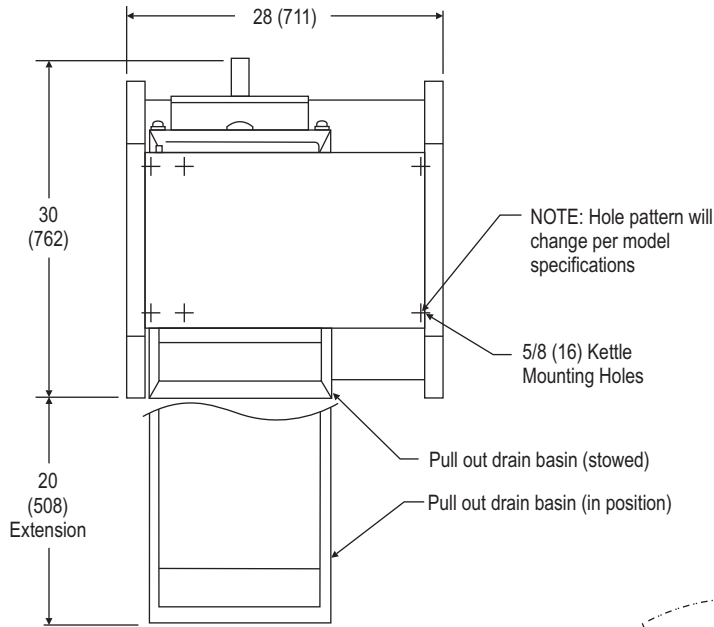
44 Lakeside Avenue, Burlington, VT 0540
Phone: (802) 658-6600 • Fax: (802) 864-0183



KETTLE STANDS

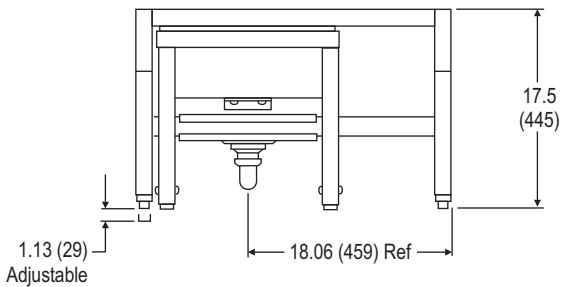


APPROVAL/STAMP

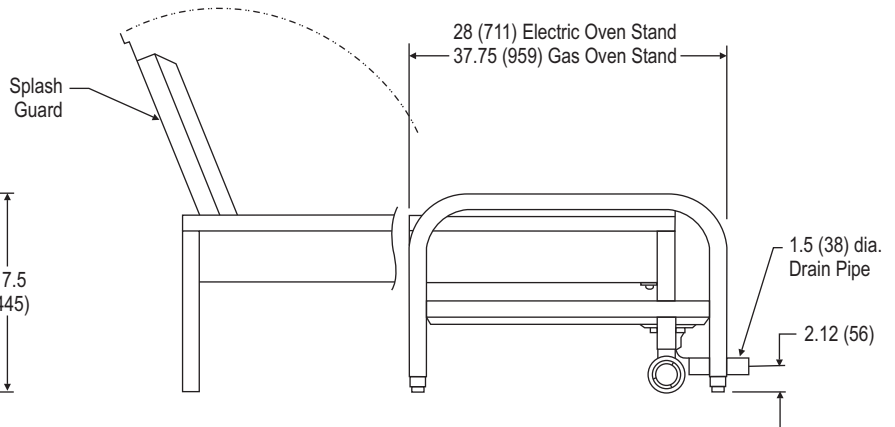


DIMENSIONS ARE IN INCHES (MM)

TOP VIEW



FRONT VIEW



RIGHT SIDE VIEW

SHORT FORM SPECIFICATIONS

Provide Blodgett heavy duty open leg support stand for gas and electric tabletop kettles. Kettle stand to have 1-1/2" square tube frame design; 18" high top for ergonomic equipment work height; and adjustable bullet feet. Separate drain cart (when specified) shall have large capacity 6" deep basin with rear drain, removable combination splash shield and cover, with rear casters and front leg glides for easy movement and stability. Provide options and accessories as indicated.

NOTE: The company reserves the right to make substitutions of components without prior notice.

BLODGETT

44 Lakeside Avenue, Burlington, VT 05401 • Phone: (802) 658-6600 • Fax: (802) 864-0183